



®
ATT INOX DRAIN
Stainless Steel Engineering

ATT CASE STUDY
Long-term cooperation

www.att.eu

Carlsberg
Group

CUSTOMER

Project: Carlsberg Group

Projects in: Poland, Germany, Russia, Romania, France

Sector: Brewery

The Carlsberg Group is present in more than 100 countries around the world. It is the leading producer of beer and beverages.

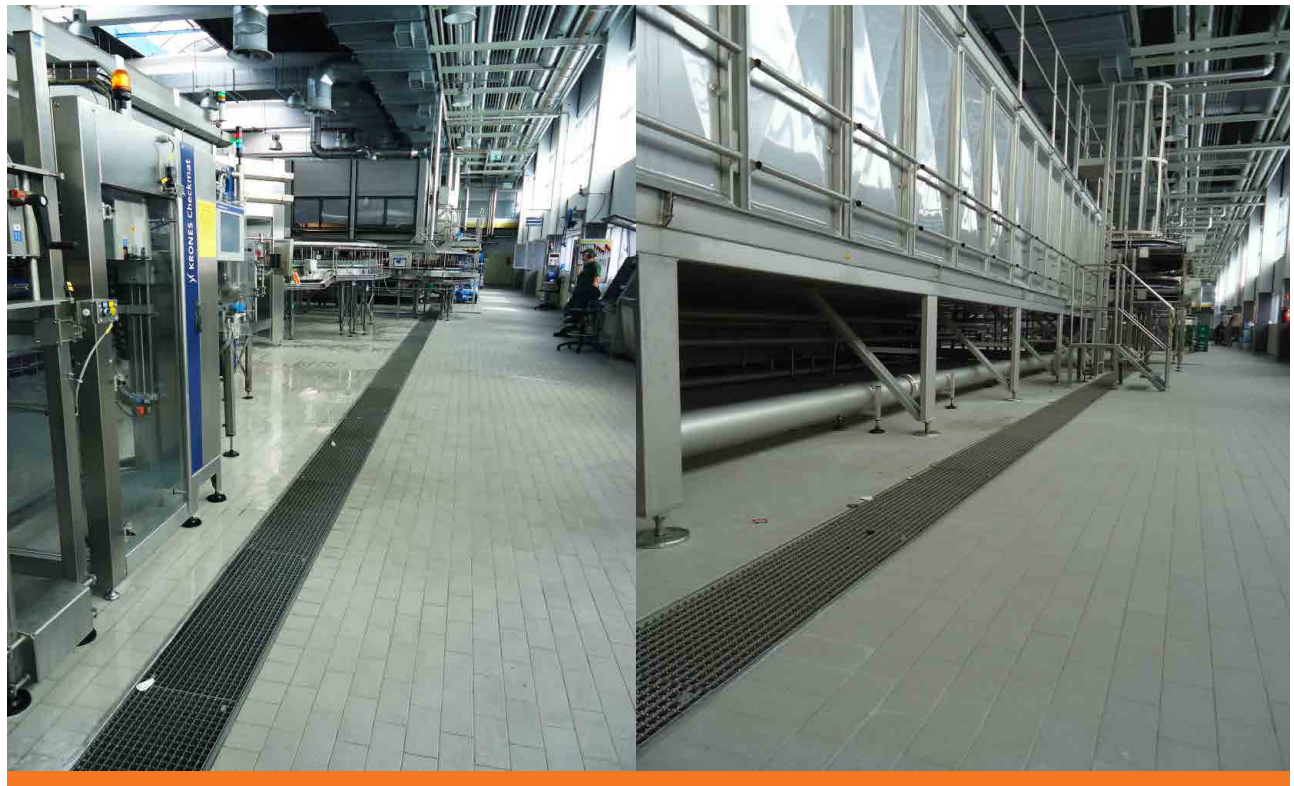
The Carlsberg Poland Group includes three breweries: Okocim Brewery in Brzesko (1845), Bosman Brewery in Szczecin (1848) and Kasztelan Brewery in Sierpc. ATT products are installed within those plants.

REALIZATIONS

ATT has established a longstanding collaboration with **the Carlsberg Group** spanning over a decade. Our robust portfolio of solutions tailored for the Carlsberg Group exemplifies the depth of our partnership. Below, we highlight a selection of these implementations.

The inaugural engagement transpired in 2012 at the **Brzesko (Okocim)** facility. During this phase, we provided comprehensive drainage solutions, manufactured and delivered to meet the specific needs of the Carlsberg factory.

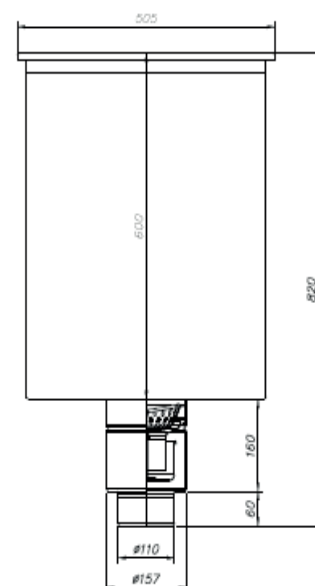




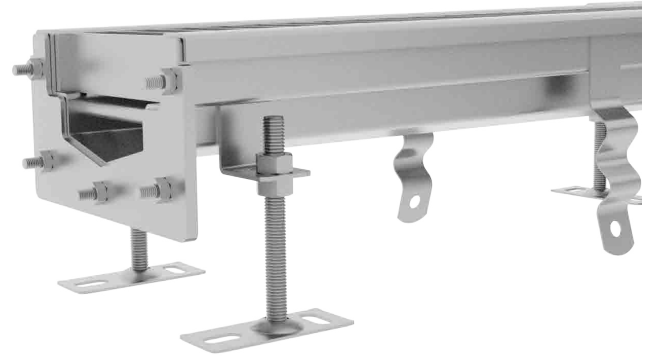
The successful first project paved the way for sustained manufacturing endeavours over the years. Throughout the modernization and expansion initiatives undertaken at the Brzesko plant, we served as a reliable supplier of drainage solutions. Furthermore, in 2014, our expertise was enlisted for the provision of solutions tailored for a new production line at the **Szczecin (Bosman)** facility.



In 2015, our products were once again selected for installation within a newly constructed production hall in **Sierpc (Kasztelan)**. Subsequently, in 2019, we resumed our collaboration with the Szczecin (Bosman) facility, executing an order for a substantial 500x500x650 channel, underscoring our commitment to meeting diverse project requirements.

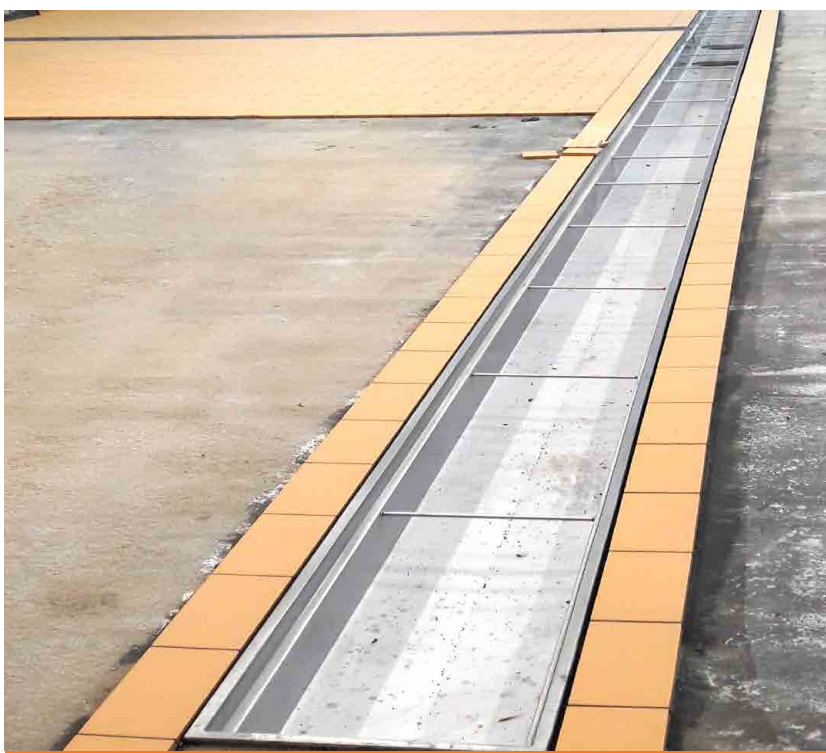


Just a year later, we received an order to implement another project for the Bosman Brewery. We made the following channels S200: L6300 / L3900 / L2500 / L13000.



ATT maintains a consistent presence as a supplier of drainage solutions to the Carlsberg Group, particularly during the continuous renovation efforts undertaken at their production facilities. Our role involves routinely fulfilling orders for an array of essential components including **drains, siphons, and sediment baskets**. The incorporation of sediment baskets is particularly noteworthy as they efficiently capture labels and glass fragments generated throughout the production process, thereby enhancing the operational efficacy of drainage systems within these production plants.

In recent years, one of the largest orders for Carlsberg in Poland was manufacture and installation of drainage systems for a plant in **Brzesko**.



ATT

Benefiting from positive recommendations originating from Poland, we successfully broadened our collaborative efforts into international markets. Particularly notable is our execution of an order for **Holsten Brewery in Hamburg** in 2018. This endeavour merits special recognition due to its comprehensive scope, encompassing not only production and installation but also extensive support in selecting the most suitable drainage system. The project commenced with meticulous hygienic design and the creation of technical drawings outlining the entire drainage system, inclusive of channels and point drainage elements.

Key features of this implementation included:

- channels ranging from S250 to S450 equipped with hygienic ladder gratings, as well as
- floor drains spanning from W200/110V1 to W1200/2x300V1, ensuring a maximum flow rate of 50 l/s.

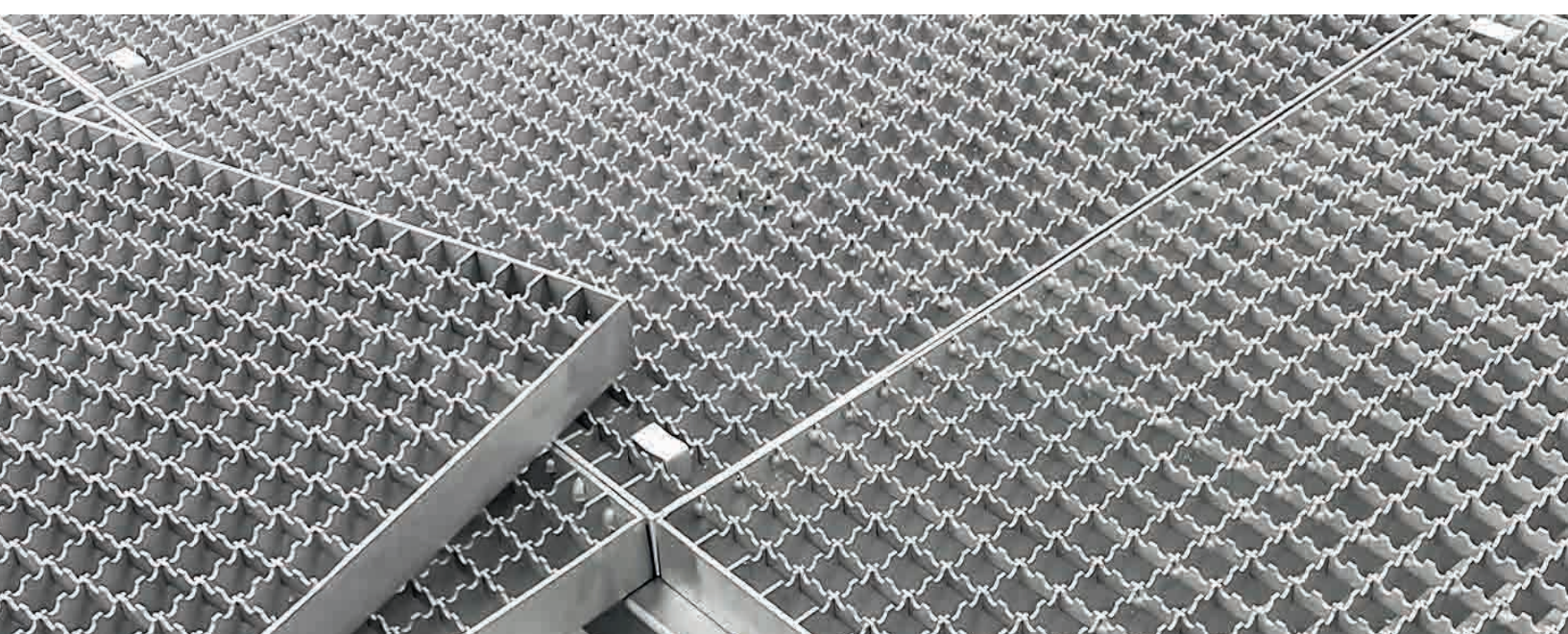




Our collaboration with the Carlsberg Group extends beyond Poland to encompass projects in **France**, specifically with **Kronenbourg**. Noteworthy among these is our involvement in projects spanning the years 2021 to 2024, which encompassed the installation of 2100 x 2500 mm channels, S250 channels, and W300/99V1 drains.








ATT INOX DRAIN
Stainless Steel Engineering

www.att.eu

