



ATT INOX DRAIN
Stainless Steel Engineering

Drainage channels

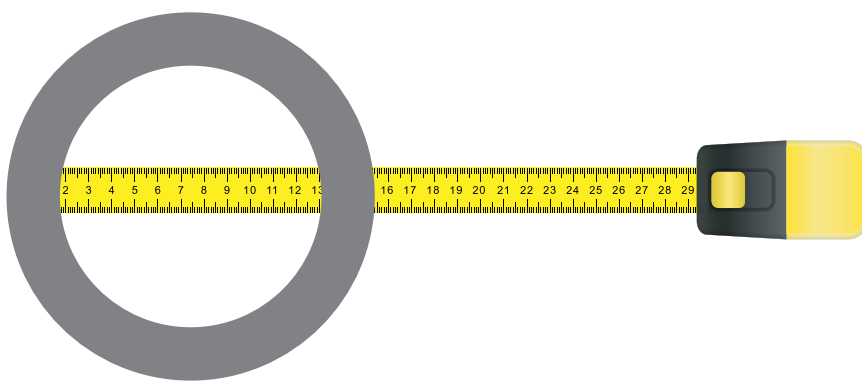
General installation procedure



Before starting the installation works, please check the quantities specified on the delivery documents and compare them with the delivered goods. Any differences should be reported immediately to the manufacturer.



Check the internal diameter and type of underground pipes (PVC, HDPE, ABS, stainless steel, copper, etc.). Make sure you have all the required couplings to connect the channel outlets to the underground pipes.



Please measure the inside diameter of the pipe and send it to ATT representative.

To optimize transport costs, gratings, traps and waste baskets may be delivered pre-mounted on channels. If this is the case, please remove the gratings from the channels and store them separately to avoid damage. They can be mounted when the construction is almost ready.

**Ground preparations:**

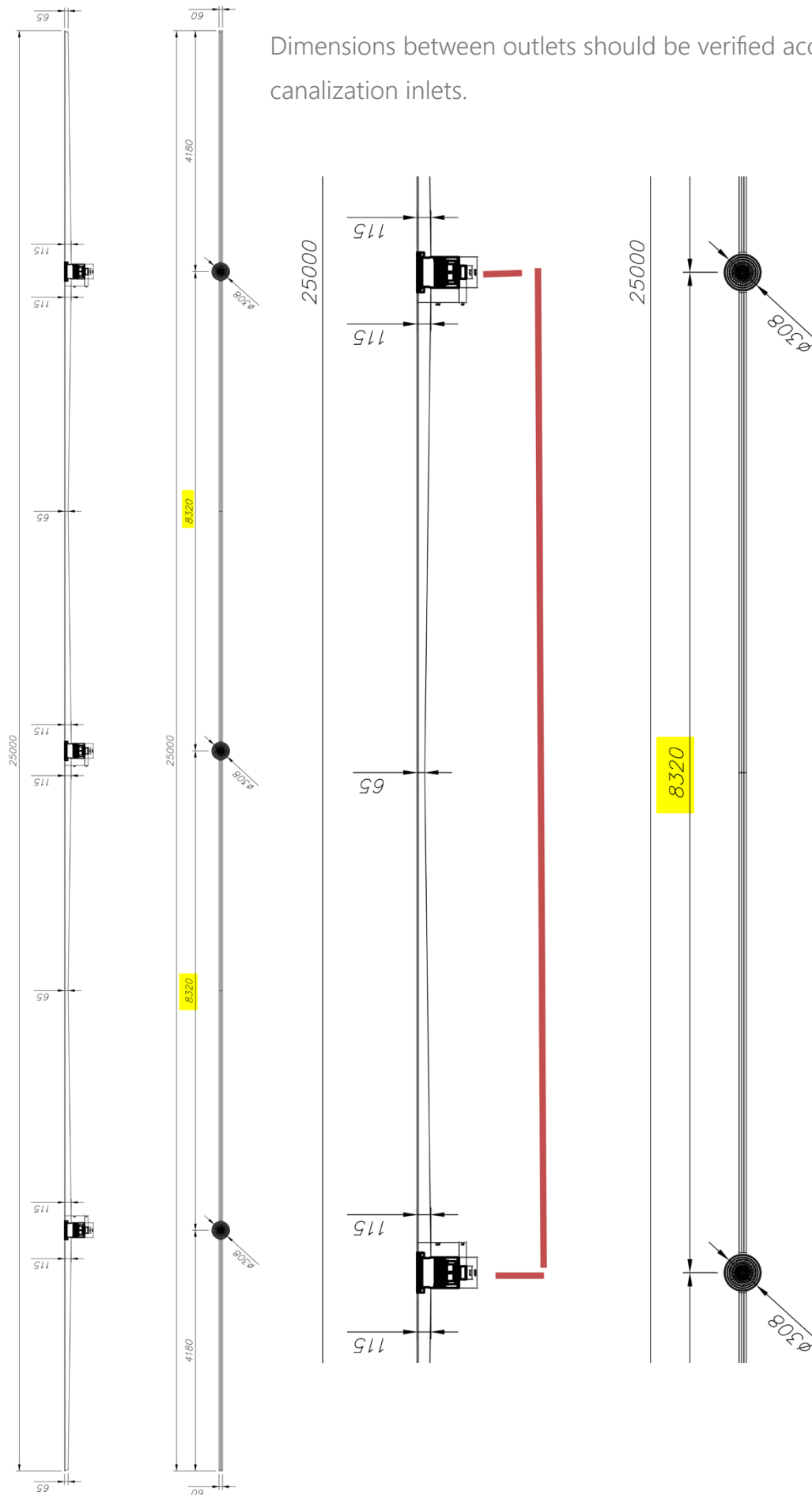
Concrete layer of minimum 10 cm is needed to install the leveling feet.



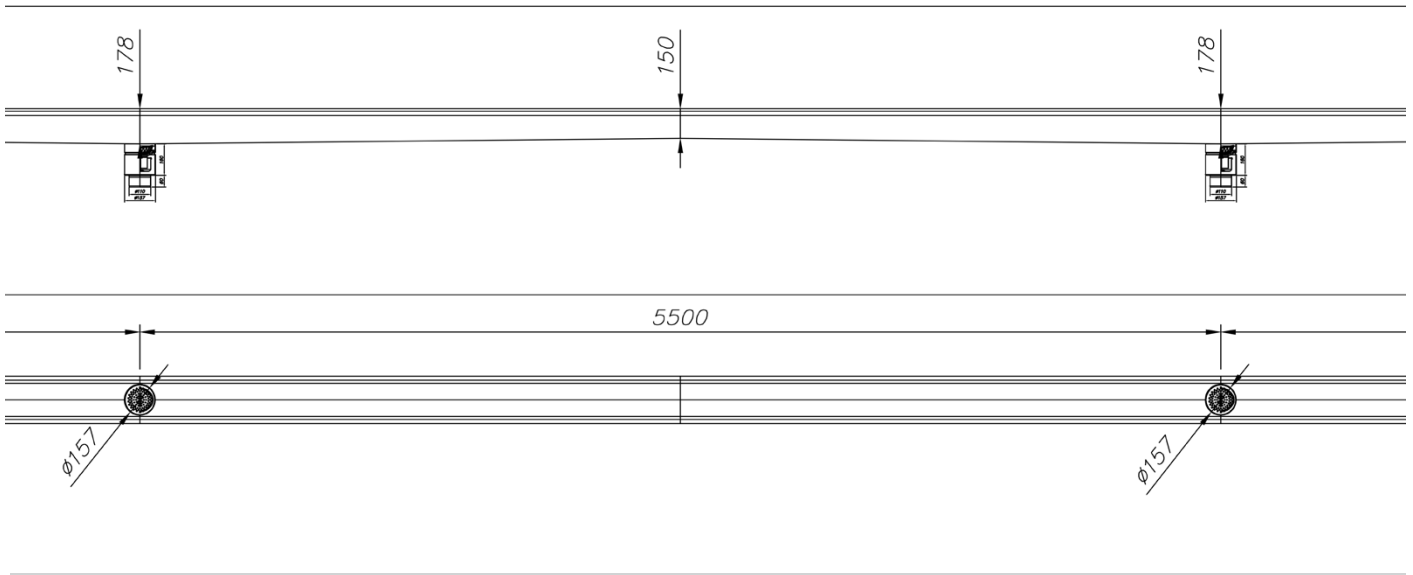
Don't install channels on a unstable floor like sand, earth, etc.



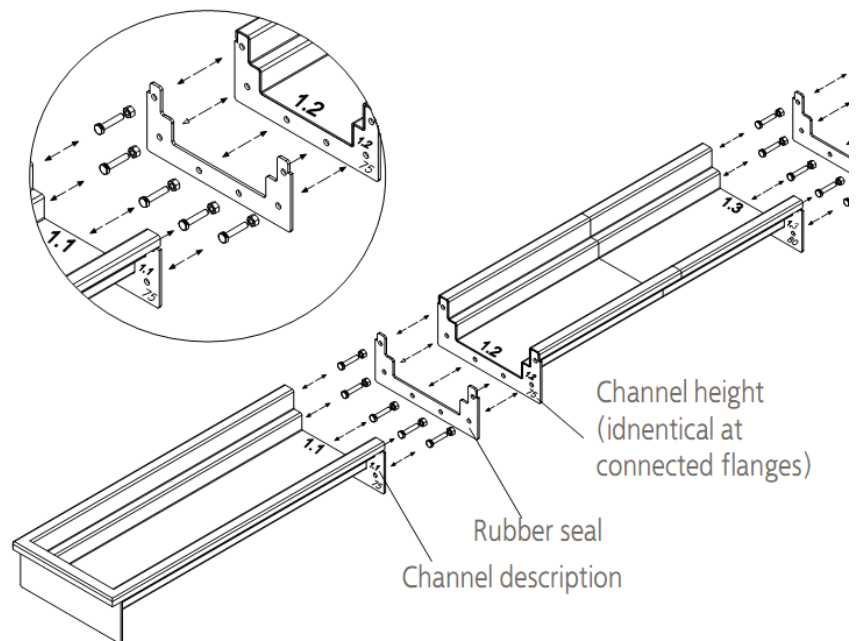
VERY IMPORTANT: Inlet pipe to the canalization must NOT be covered with concrete. The pipe should be loose e.g. 500 x 500 mm sand area, so it can be adapted the drainage if necessary.

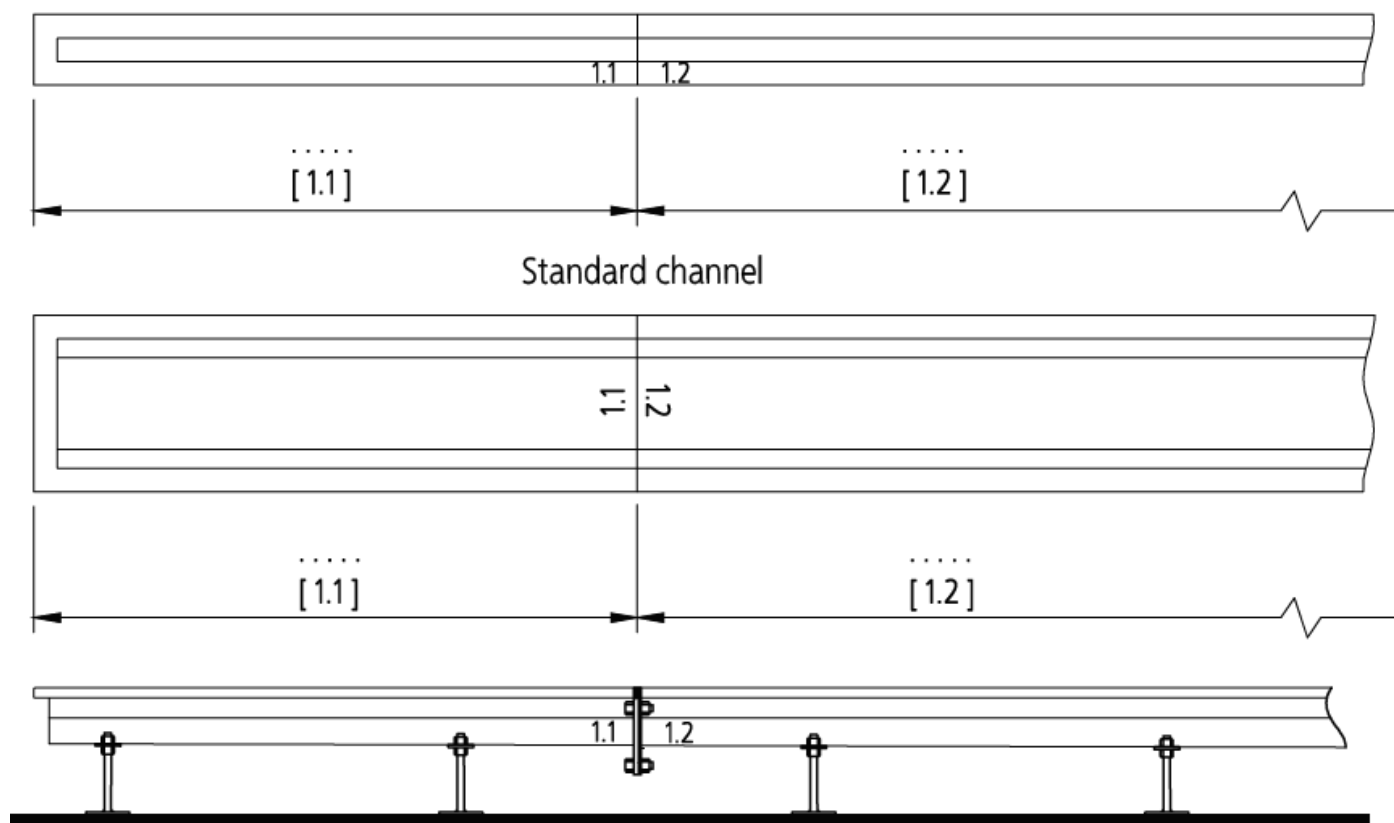


Correct and precise installation of piping is important, especially if there are more outlets per 1 channel.



Before installing the channel bolt all sections according to the "installation guide", included in the manufacturer's documentation. Ensure tightness of all the flange connections.



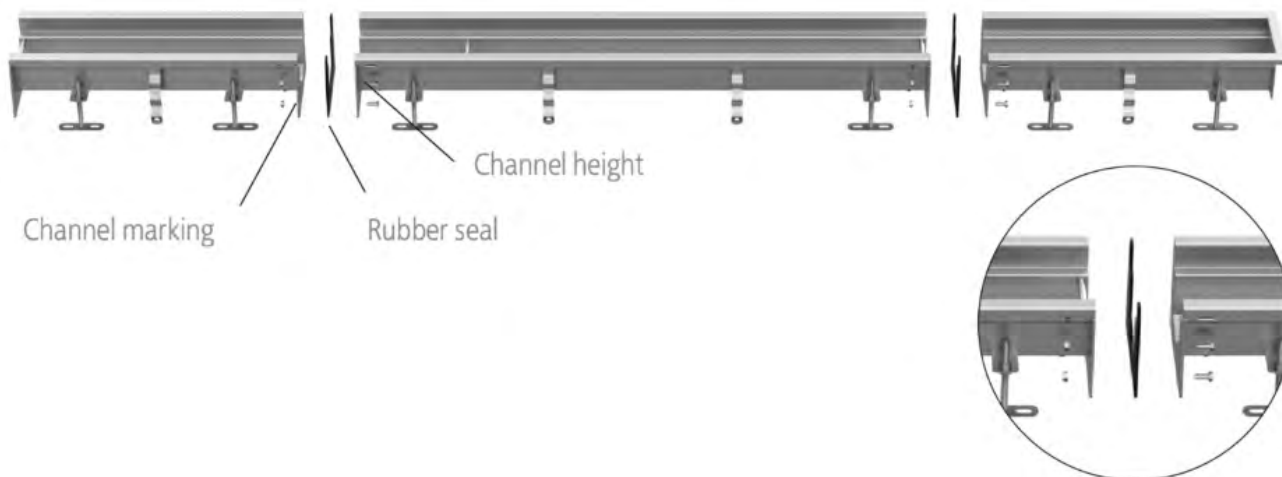


Markings on the flanges.





Place the flanges of the channels close together. To avoid mechanical damage, please turn the channels upside down.



For channels that have two or more outlets, make sure that the measured distance between floor drains matches the dimensions provided on the manufacturer's drawings.

Channel sections must be on the same level while connecting them. Please make sure that the gasket is always between the steel flange plates.

Put all screws inside the holes and screw them slightly at first. After all screws are well-caught, fix them very strongly so that the gasket is pressed. Then cut the upper part of the gasket very carefully, if necessary.

Mount the levelling feet on the corresponding slots.



Check the channel installation height on the drawings and fix the levelling feet at the approximate final position.

This way, the channel will be at the approximate final height when it is positioned on the installation place.

After the channel is mounted, invert it to the right position and carry it as close as possible to the installation place. Please make it very carefully, each channel section should be carried by minimum 2 persons. Each connection flange should be held by one person to avoid tension and mechanical damage on the connection flanges.

Place the channel on the final installation place, following the customer's installation drawings.

Cover the channel with rigid timber panels of equivalent dimensions, so that channel contraction during concrete pouring and curing is avoided.



If wooden panels are not available, wooden sticks should be used at 40 cm distance between each other.

Connect the channel outlets to the underground piping system. Make sure the connections are tight.



Make sure the channel is well aligned, then bolt it down to the concrete floor using the holes in the levelling feet for that purpose.



Place the channel at the required height. Use the levelling feet and height regulation nuts for that purpose. The channel always is positioned below floor level, according to the project specification.

Use a laser or optic level measuring device. Please check the height of the channel minimum every 50 cm, on both edges.



Make sure all lateral anchoring plates are in horizontal direction, as shown in the photo below.



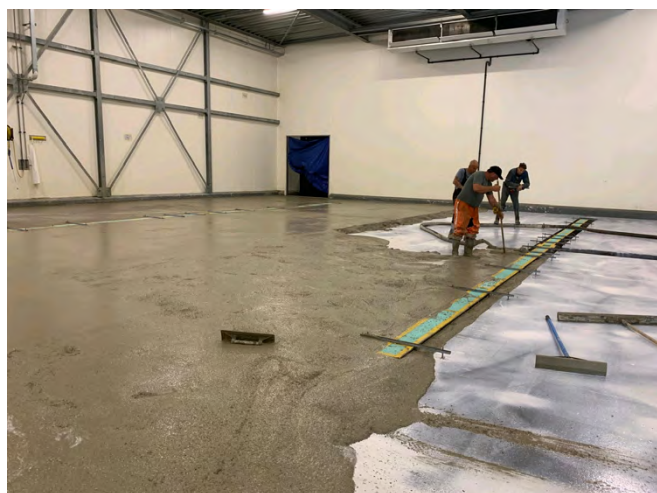
Pour concrete around the levelling feet and anchoring elements. Pour concrete up to the required level.



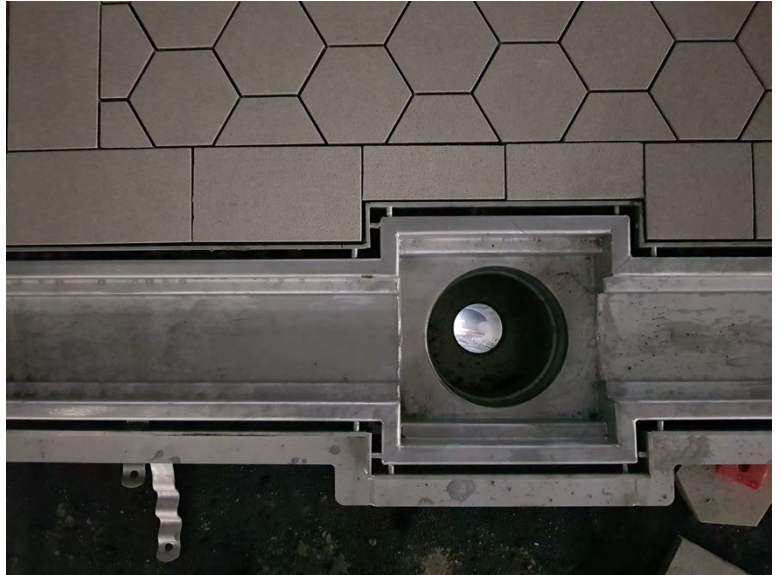
- Take care that no concrete is poured inside the channels, especially in the outlet sections.
- Make sure that concrete is poured very slowly on both sides, so the anchored channel will not move from its position.
- Very important: make sure that concrete fills the channels edges. You can do it with a simple spatula.

Height should be set with the floor level.

Please do not forget about the slope in the floor - directed down to the drainage.

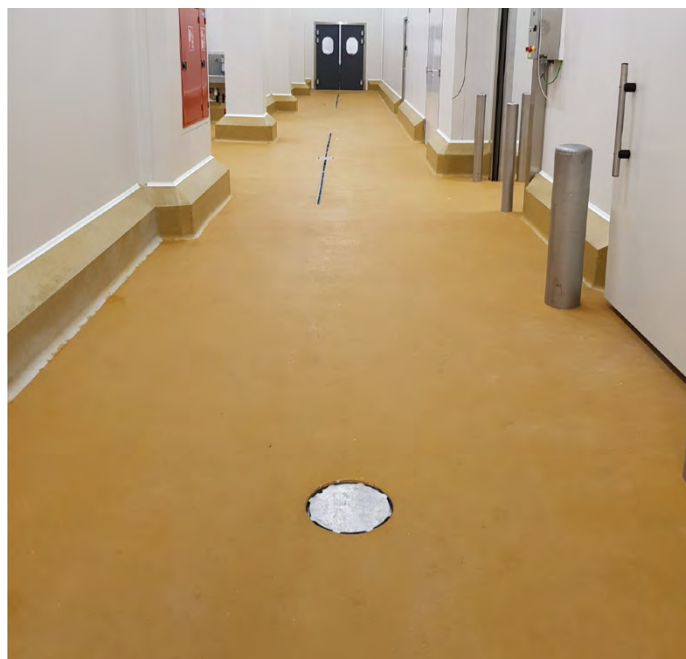


Finish the floor with the required final layers (e.g. epoxy, tiles).



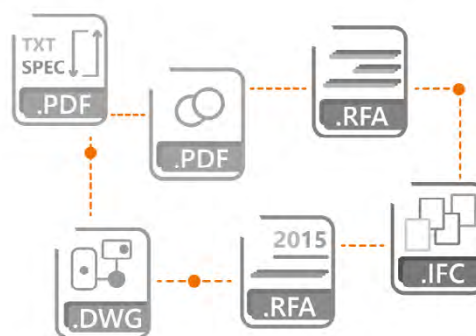
Make sure all elements are clean, free of dirt (dust, sand, concrete, etc.).

Remove the timber panels and mount the stainless steel gratings.



ATT's BIM Library

www.models.att.eu



Download ATT's catalogs

www.attinox.com

Polish



English



German

