

  
**ATT INOX DRAIN**  
Stainless Steel Engineering

# H. Design Channel

Perfection in Hygiene Design

 **H. Design**  
HYGIENIC SYSTEMS BY ATT



HYGIENIC ENGINEERING & DESIGN GROUP  
**ehedg**

Flow is more laminar in comparison with typical rectangular shape bottom of the channel - faster transfer of fluids to the outlet.

The discharge of fluids into the channel causes less pollution - reduction of the bacteria accumulation.

User needs less amount of water to keep the channel clean - ecology & efficiency.



### Example Description for S250 type

- External width 250 mm, internal width 180 mm
- Material stainless steel AISI 304 (1.4301), sheet thickness 2 mm
- Rounded bottom, slope 1%/m
- Initial height 100 mm
- Reinforced edges made of stainless steel 12 x 12 mm or synthetic resin edge reinforcement against mechanical and thermal loading in accordance with EHEDG
- Edges are brushed with K320
- Round bars every 600 mm, M10 stainless steel levelling feet and concrete anchors
- Pieces longer than 4000/6000 mm connected by EPDM flanges or to be welt on site



[www.attinox.com](http://www.attinox.com)

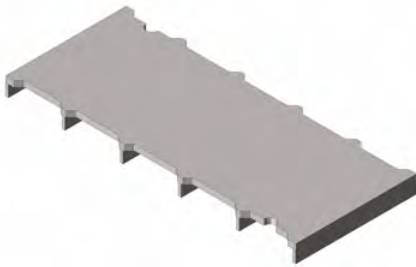
- Hygienic ladder grating, width 207 mm, length 500 mm
  - Load class M 125 kN in accordance with EN 1253 or C250 by EN1433 = forklift traffic
  - Ladder bars fully welded according EHEDG
- Built-in gully with 300 mm diameter, type D300 / 110V1
- Seamless, hygienic round body, deeply pressed diameter 255 mm, removable odour trap and separate waste bin (capacity 3 l), flow rate 6 l / s (= 21.6 m<sup>3</sup> / h)
- DN110 vertical or horizontal outlet
- All parts are pickled and passivated

### Options

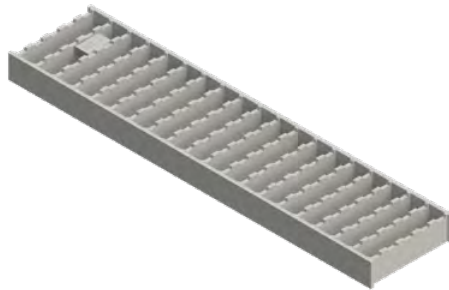
- Basket under the entire length of the channel
- 3 mm thickness
- Hinged grates



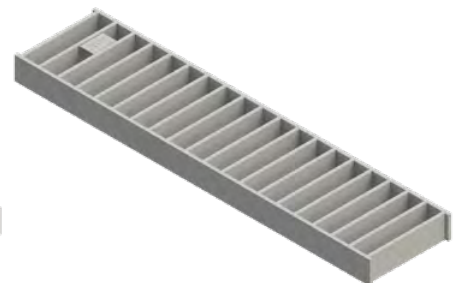
Plate grating



Anti-Slip ladder grating

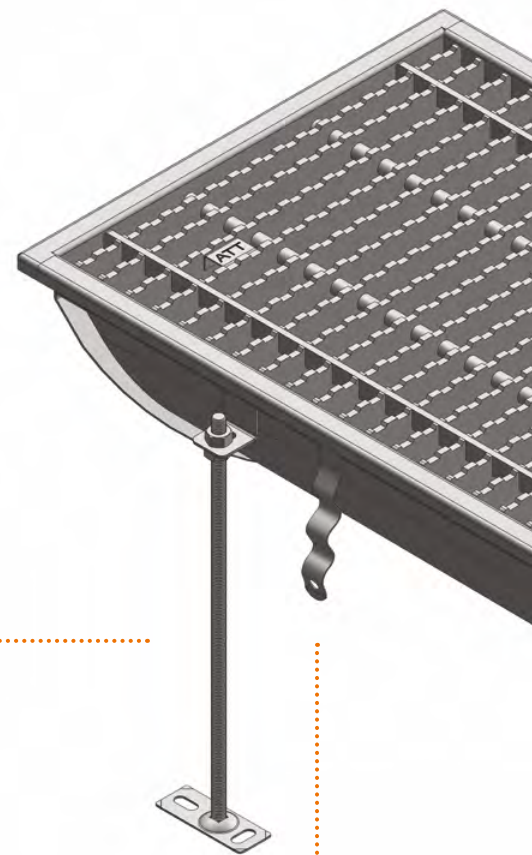
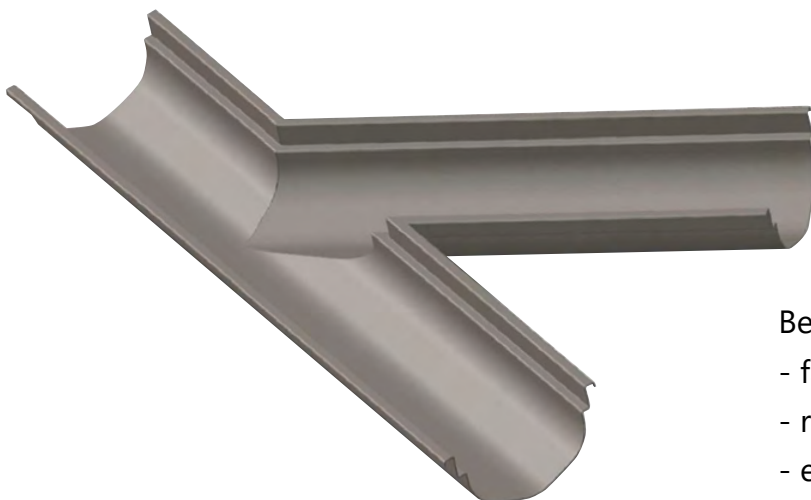


Ladder grating



Innovative rounded bottom hygienic channel:

- flow is more laminar in comparison with typical rectangular shape bottom of the channel
- the discharge of fluids into the channel causes less pollution
- user needs less amount of water to keep the channel clean

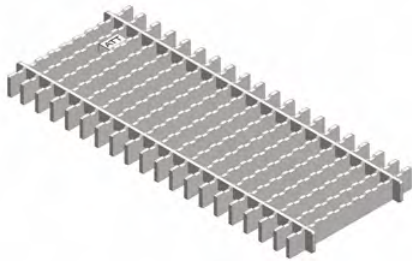


#### Benefits:

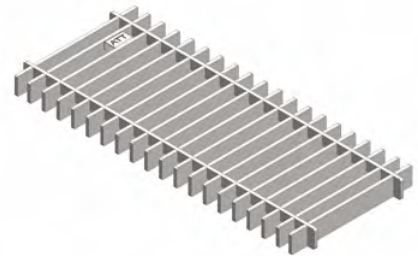
- faster transfer of fluids to the outlet
- reduction of the bacteria accumulation
- ecology & efficiency

[www.attinox.com](http://www.attinox.com)

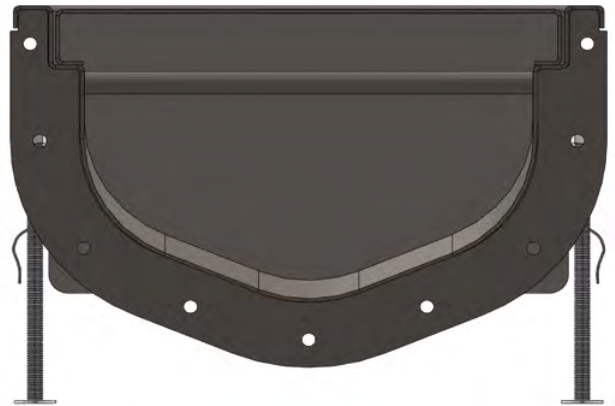
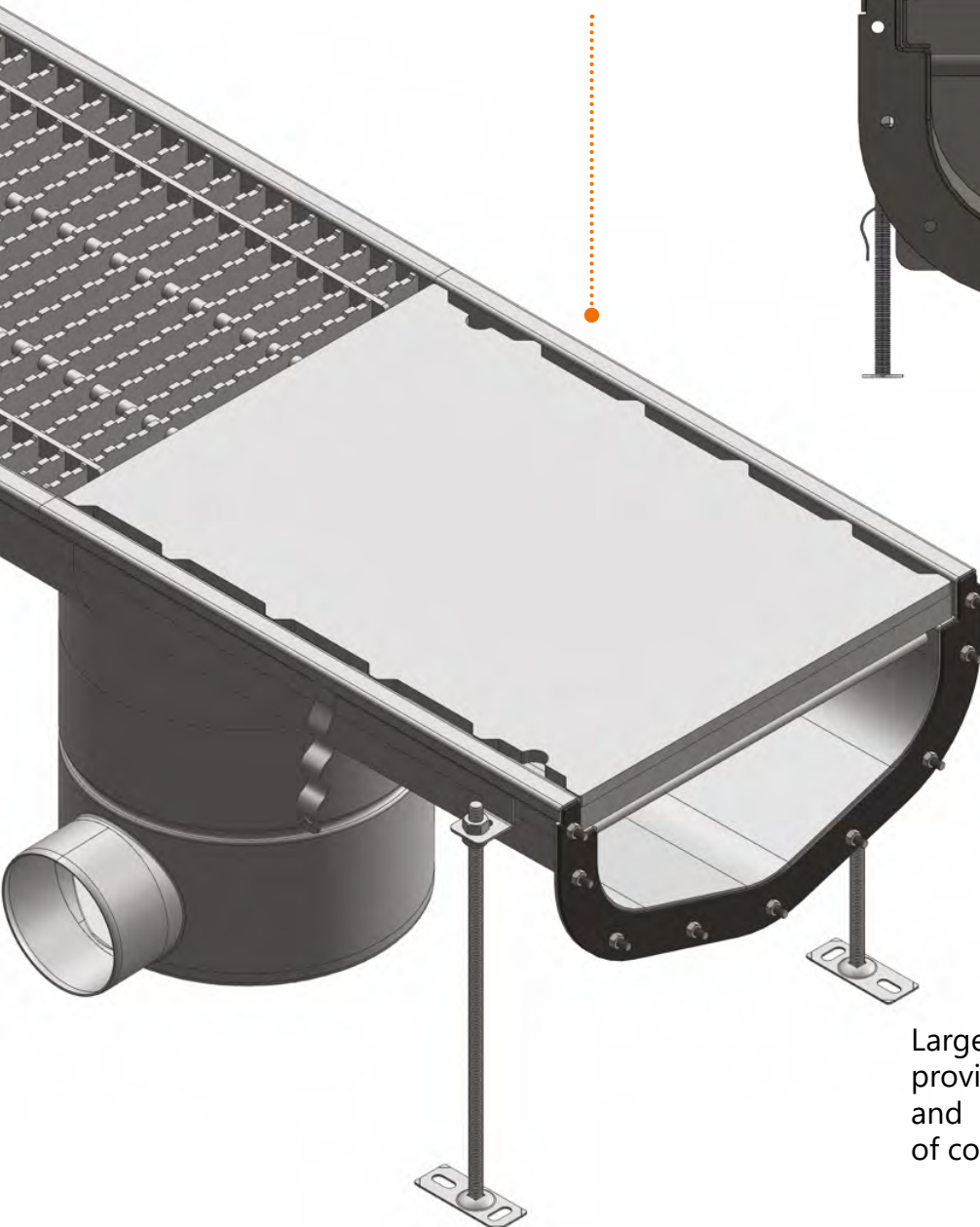
Anti-Slip ladder grating



Ladder grating

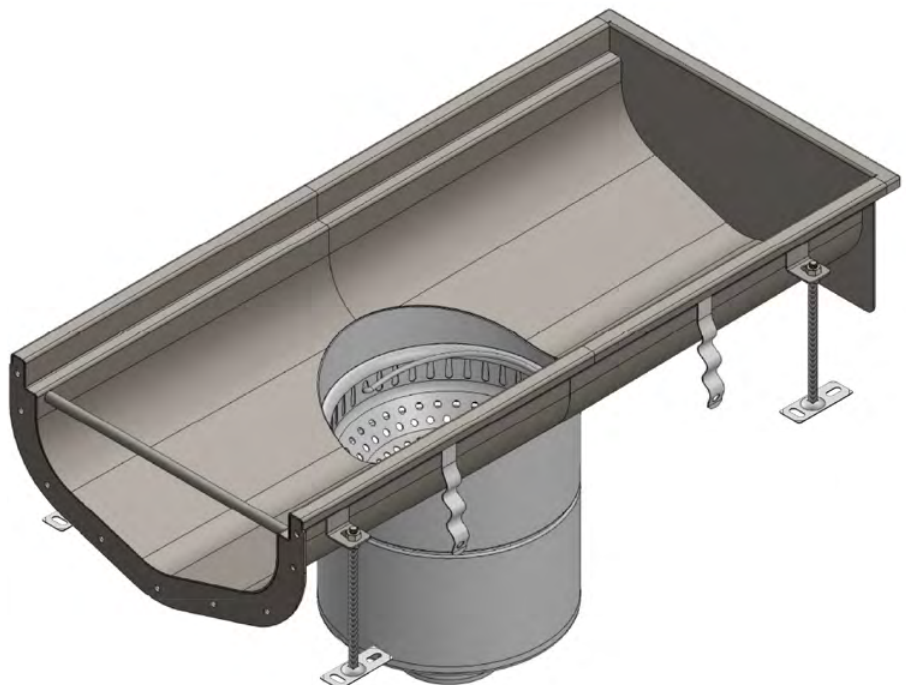
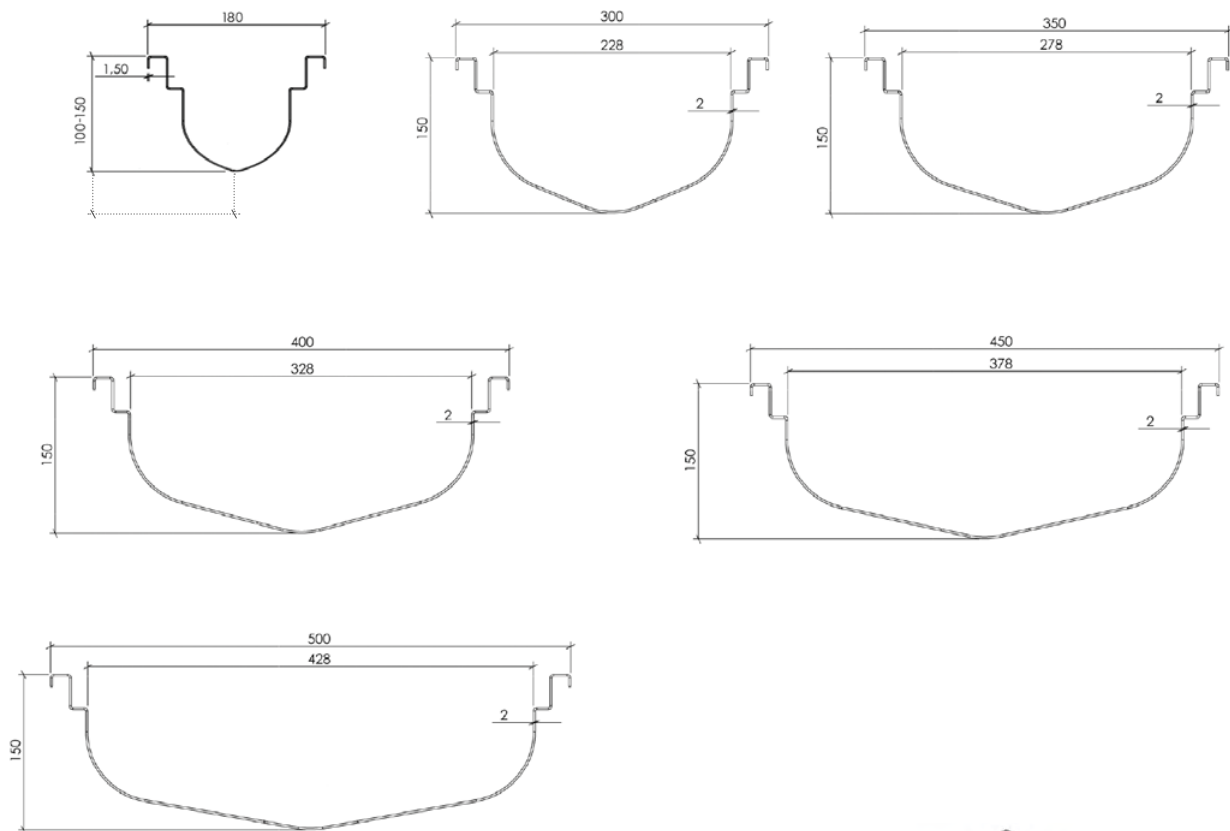


High load class plate grating.



Large radius U-shaped bottom provides high flow rate capacity and prevents from accumulation of contamination.

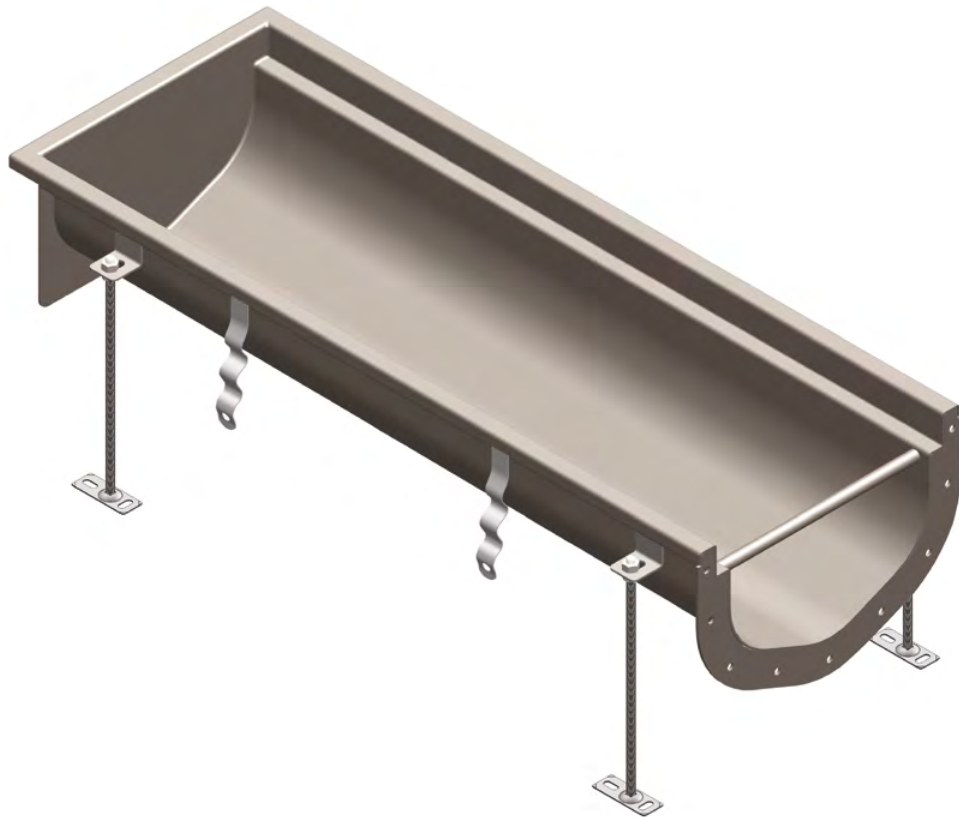




..... We can produce rounded endings.



[www.attinox.com](http://www.attinox.com)



**ATT Sp. z o. o.**

ul. Albatrosów 16 c  
30-716 Kraków, Poland  
tel.: +48 12 290 29 30  
[att@att.eu](mailto:att@att.eu) - [attinox.com](http://attinox.com)