




ATT INOX DRAIN[®]
Stainless Steel Engineering

Installation
Services




ATT INOX DRAIN
Stainless Steel Engineering

www.att.eu

tel.: +48 12 290 29 30

**WORK WITH
MODERN
ENGINEERING**

OVERALL PROJECT MANAGEMENT

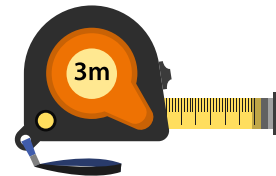
We analyse customers' expectations through face-to-face or online meetings.

1.



Basic information is collected and measurements taken. We check installation side focussing on all factors influencing installation process.

2.



3.

Creating a base project on which we make adjustments or approvals with the client.



4.

ATT's engineers prepare conclusions and present recommendations for the customer. Project's drawings are prepared for acceptance procedure.



5.

Manufacturing process.



6.

Product installation.

OPERATING RANGE

Customer Approach

The experience that ATT has gained since 2002 allows us to precisely define the client's needs. Our specialists are available at every stage of the contract. We approach projects with flexibility and take into account many variables that ultimately affect customer satisfaction.

Services

INSTALLATION OF DRAINAGE SYSTEMS

1. Assembly of channels sections and connection verification.
2. Application of the prepared channel in the sewer service pipe's spigot.
3. Levelling the channel at the proper height; 1-1.5 [mm] below the floor level.
4. Securing drainage against displacement during concrete pouring after stabilization.
5. Pouring concrete on the levelling legs and anchoring elements.
6. Precise finishing of the concrete purring with the spatula.
7. Cleaning elements from dust and debris.
8. Acceptance activities, as-built documentation.

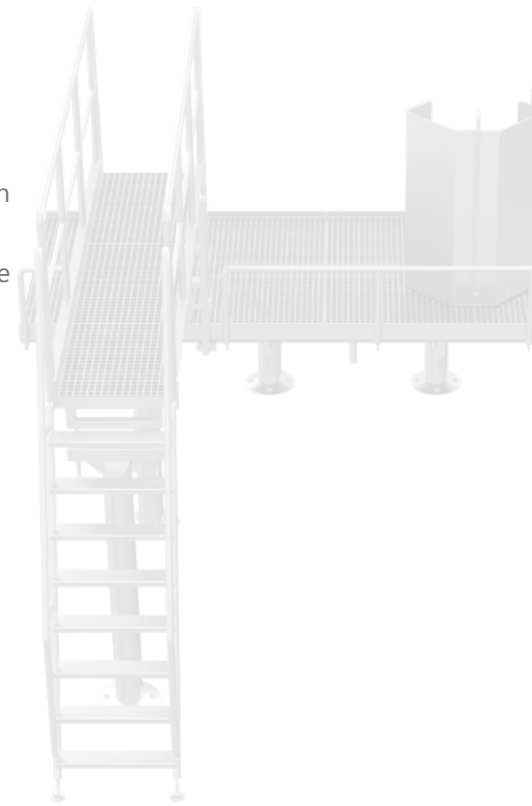
INSTALLATION OF STEEL, STAINLESS AND ACID-RESISTANT STRUCTURES

- Preparations of project documentation in cooperation with the investor (measurements, calculations, drawings, assembly guidelines)
- Prefabrication of structures at the ATT Production Plant
- Coordination of transport and unloading process
- On side assembly process (welding, screwing, riveting etc.)
- Cleaning and passivation of welds, leveling and anchoring of structures
- Optional tests performance
- Acceptance activities, as-built documentation



PREFABRICATION AND ASSEMBLY OF TECHNOLOGICAL PIPELINES

- Dismantling of old pipelines.
- Preparation and laying out of newly designed pipelines.
- Installation of supporting structures or tranches under the floor.
- Installation of pipelines. Assembly technology depends on the type of pipes material and selected technology (e.g. welding, screwing, connection by pipe muffs).
- Pipelines apply to e.g. water, steam, compressed air as well as sewage lines with varying degrees of chemical aggressiveness and temperature.
- Optional tests performance.
- Acceptance activities, as-built documentation.



INDUSTRY SECTORS

**FOOD
INDUSTRY**

**BREWERIES
AND
BOTTLING
PLANTS**

**INDUSTRIAL
PRODUCTION**

**PUBLIC
FACILITIES**

**OUTDOOR
PUBLIC
SPACE**

REFERENCES

Global Presence



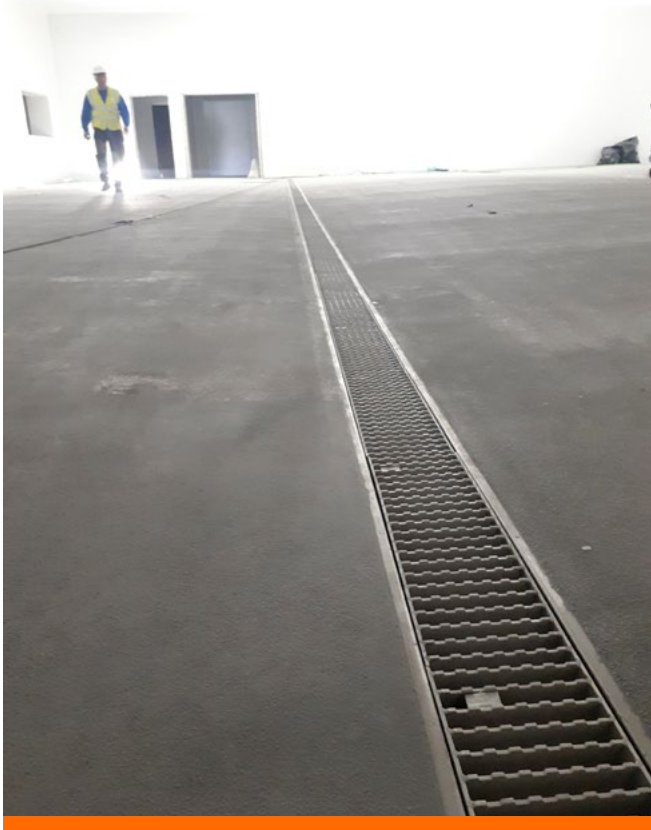
ATT products reach over 60 countries around the world.



The sales department is made up of sales engineers who participate in the entire investment process. As technical advisors, they are present at every stage of the contract: during the development of design assumptions, production, assembly and service work.

ATT INSTALLATION

The proper manufacturing of elements is crucial, however it is equally important to assembly and install products professionally using ATT's extensive practical know-how.



CERTIFICATES



- Stainless steel construction products (EN 1090-2)
- Inspection of welding workshop (DIN EN ISO 3834-3)
- Welding certificate (EN 1090-2)



- Floor drains construction (EN 1253)
- Channels construction (EN 1433)
- Food safety (EN 1672)
- Hygienic design (EN ISO 14159)



- Flow rates
- Load classes
- Slippery (shoes/without)

Kontakt

ATT Sp. z o. o.
ul. Albatrosów 16C, 30-716 Kraków
tel. +48 12 290 29 30
fax +48 12 290 29 31
e-mail: att@att.eu
www.att.eu

Mail



Product catalogue



ATT




ATT INOX DRAIN
Stainless Steel Engineering

