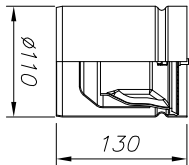
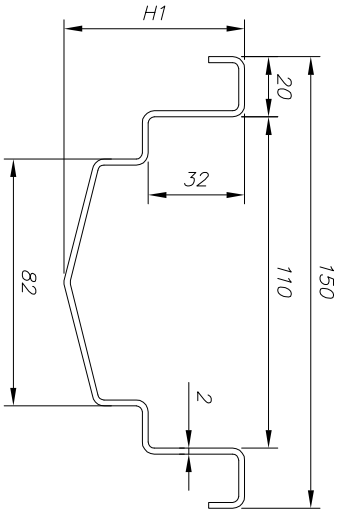
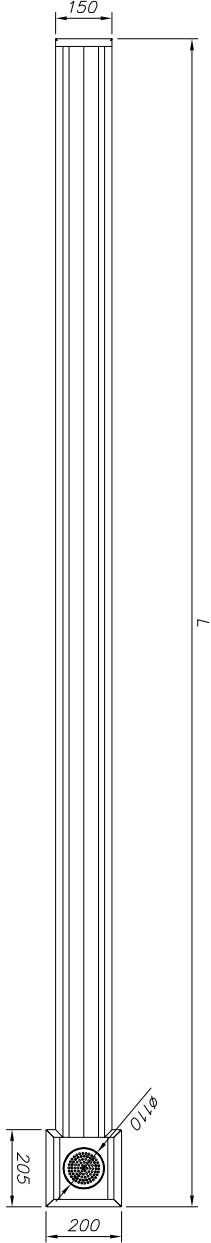
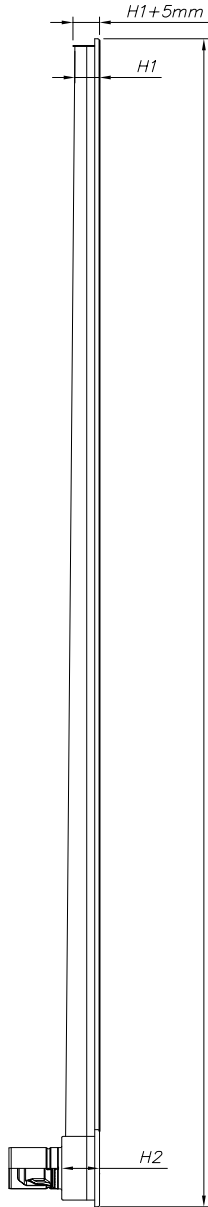


S150/L_____

ALL SS CHANNELS ARE CUSTOM FABRICATED. ORDERS ARE NON-CANCELLABLE AND NON-RETURNABLE



☐ OPTIONAL FLAT BOTTOM
(H2 MAX = 95mm)

ANCHOR TABS

LEVELING FEET

FLANGE CONNECTIONS

SPACERS

STANDARD SIZES AND PRODUCT FEATURES

SECTION

OUTLET

OPTIONS (MARK THE FIELD)

SPECIFY DIMENSIONS

GRATING			
<input type="checkbox"/>	<input type="checkbox"/>	<input type="checkbox"/>	<input type="checkbox"/>
Mesh Anti-Slip	Perforated	Ladder	Plate

No	L[mm]	L1[mm]	H1[mm]	Slope[%]	H2[mm]
1	1000				
2	1500				
3	2000				
4	3000				
5					

L1 - CENTER / END OUTLET / DISTANCE [mm]

COMPANY

APPROVED BY

DATE

SIGNATURE

MATERIALS

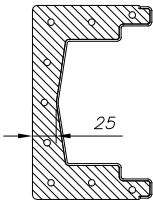
<input type="checkbox"/>	<input type="checkbox"/>	<input type="checkbox"/>	<input type="checkbox"/>	<input type="checkbox"/>
None	Rubber	Epoxy	Profile	Flat Bar

NOTES

☐ 304

☐ 316L

STAINLESS STEEL FABRICATED STANDARD CHANNEL S150, 150 mm WIDE, OPENING 110 mm WIDE, MATERIAL 2.0 mm THICK, AVAILABLE WITH OR WITHOUT SLOPE (1% STANDARD), WITH ANCHOR TABS AND LEVELING FEET. DIFFERENT OUTLET GRATING'S AVAILABLE. RUN LENGTHS LONGER THAN 4.0 m PROVIDED WITH FLANGES AND GASKETS.



S150_OK_Wm-110V1