

SHOWER BASE

Shower base is made of stainless steel AISI 304. We use 1.25 [mm] thick decorative metal panel as a production material. Circle-style pressing finishing ensures the required rigidity of the construction and it also gives the steel anti-slippery attribute. Runoff to the sewage system is possible through regular bathroom outlets available on the market.

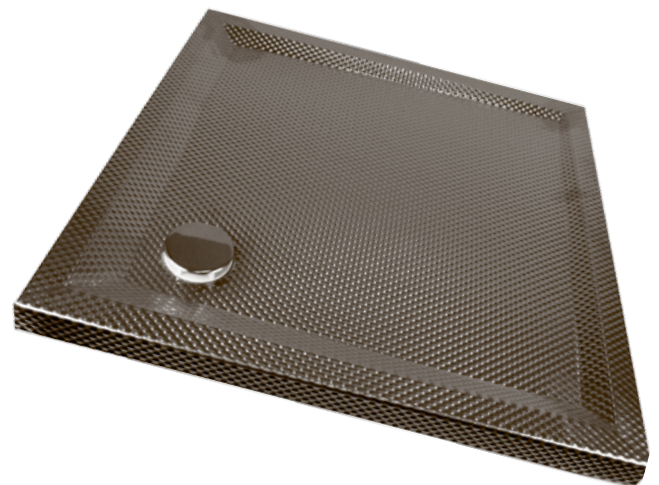
APPLICATION

- all places for disabled people such as health centers, hospitals, rehabilitation facilities,
- bathroom furnishing for premises, sport centers, production halls.

ADVANTAGES

- easy to clean,
- possibility of using all sorts of disinfectants,
- antibacterial feature of stainless steel,
- comfortable wheelchair entry to shower enclosure without meeting any obstacles on the way,
- easy installation,
- aesthetic look.

catalogue number	dimensions [mm]	height [mm]
00.208008.07	800 x 800	40
00.209009.07	900 x 900	40



STAINLESS STEEL SHOWER BASE

